

If it's
**criminal or
threatening**

- Call police on 101 at any time
- Report online, download a diary template or find out more about tackling anti-social behaviour at www.avonandsomerset.police.uk
- If it's happening then and there call 999 straight away.

Is it
hate crime?

If you feel the behaviour is targeted at you personally because of your race, religion, age, disability, gender identity or sexual orientation, this could be a hate crime. This is a serious offence and you should report it to the police.

www.avonandsomerset.police.uk

Feel like
**nothing's
happening?**

If you have reported three problems within six months to the council, police, or housing provider, but don't feel it has been dealt with, you can apply for a review involving all the agencies using the Community Trigger.

The Community Trigger is also available when five incidents have been reported within six months by a group or organisation.

You can apply the trigger no matter who it was reported to.

To find out more:

- Contact your local council (details overleaf)
- Visit www.avonandsomerset.police.uk/asbtrigger or call 101

Call 101
for a large text version



against anti-social behaviour

Are **YOU** affected by
**Anti-Social
Behaviour?**



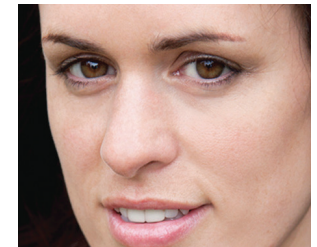
My neighbours play loud music at all hours



I get graffiti on my wall



My windows get smashed



There's smashed glass in the playground



I feel intimidated by street drinkers

What is **anti-social behaviour?**

It's any activity which makes people upset and spoils their quality of life. The legal definition of anti-social behaviour is: 'Conduct that has caused or is likely to cause harassment, alarm or distress.'

It isn't always a criminal offence. Councils, police and housing providers have different powers to deal with different problems and often work together to find solutions.

If young people are simply gathered in the street, near shops or in parks, they aren't doing anything wrong. However, where young people are rowdy, abusive, or committing damage or other crime or disorder then please report it.

I'm affected by anti-social behaviour. What can I do?

Tell the police, the council or your housing provider. If you have a carer or support worker they can help you report it. The police, council and housing providers need to know what's happening in order to respond and as evidence for any injunction, prosecution or court order.

If it's an ongoing problem, keep a diary with:

- The date, time and place of the incident
- What happened, who was there (by name if known) and their description
- If you reported the incident, note down the name of the person and organisation you told, the date and time; and any reference number they gave you
- Write down how the incident made you feel

Who to **tell**

If it's anti-social but not criminal, such as littering, contact your council. If you, or those responsible, live in social housing, contact the housing provider.

- **Bath and North East Somerset** **01225 842462**
www.bathnes.gov.uk
- Bristol 0117 922 2500
www.bristol.gov.uk
- **Mendip** **0300 303 8588**
- North Somerset 01934 426 752
ASB@n-somerset.gov.uk
- **Sedgemoor** **0845 408 2540**
community.safety@sedgemoor.gov.uk
- Somerset 01823 357114
- **South Gloucestershire** **01454 868 582**
www.southglos.gov.uk
- South Somerset 01935 462462
www.southsomerset.gov.uk
- **Taunton Deane** **01823 356332**
housingasb@tauntondeane.gov.uk
- West Somerset 01643 703704
www.westsomersetonline.gov.uk

Call 999 straight away if a crime is taking place, or if you feel threatened and the suspect is still nearby.